



# SOUTH FOUR CORNERS

## Citizens Association



*Building a stronger community, one neighbor at a time*

Spring 2024

### INSIDE THIS ISSUE

Mark Your Calendars	1
President's Corner	2
Next SFCCA Meeting	2
Local History Corner	3-4
Advocacy	4-5
News You Can Use	
Waste Transfer Stn	6
Dennis Ave Bridge	6
Concerts at Sligo Golf	7
Pothole Repair	7
Aquatic Center	7
Tributes	8

### MARK YOUR CALENDARS!

#### **May – date/time TBD**

Community Yard Sale  
(see SFC website and listserv for updates)

#### **May 21 – 7 pm**

SFCCA Community Meeting  
Schweinhaut Senior Center

#### **June – date/time TBD**

Ice Cream Social  
(see SFC website and listserv for updates)

#### **July 23 – 7 pm**

SFCCA Community Meeting  
Schweinhaut Senior Center

#### **Sept 14 – 1 to 5 pm**

Front Porch Music Fest

#### **Sept 17 – 7 pm**

SFCCA Community Meeting  
Schweinhaut Senior Center

**W**e are back! After a four year hiatus, the SFCCA newsletter is ready once again to serve the residents of South Four Corners. We now publish quarterly.

Inside each issue, you will find the many articles and community news you had come to expect – local advocacy reporting, land use development that affects our neighborhood, upcoming family-friendly community events, and a brand new "News You Can Use" column offering useful and practical information about Montgomery County services and local announcements. Best of all, our civic association, SFCCA, is up and running, continuing to play its active role in protecting and preserving our neighborhood, and supporting community events. We have new leadership, and a growing group of committed and talented volunteers involved in various committees. **Get involved and join us!** It's lots of fun, and your input will help support the vibrancy and safety of our South Four Corners community.

**Thank you!**

## President's Corner

# FAREWELL FOR NOW!

### Dear Neighbors,

Four years ago, when my wife Amanda and I were looking for a home to grow our new family, we fell in love with South Four Corners. We call our diverse community an oasis. It is simply amazing. Indeed there are fewer feelings greater than walking our two Shiba Inus through the neighborhood or pulling off busy Rt. 29 into the serenity of our community after a long day.

With a new child due any day now, I will be taking a step back from my position as SFCCA President to give more time to my responsibilities as father, effective May 19, 2024. During this time, Vice President Jonathan Kirshenbaum will lead the organization, and logistics will be determined at an upcoming Executive Board meeting scheduled.

Still, during my short tenure as President, I am glad to have first steered our community's focus to public safety. Our

2024 General Body Meeting's first guest, Captain McBain, gave some well-received low crime rates for South Four Corners. But we must continue to remain particularly vigilant about reporting vehicles we see speeding in our streets and vehicles running stop signs.

As I step away, I would like to acknowledge the neighbors I have come to know and appreciate, including Jonathan Kirshenbaum, Tricia Brooks, Eileen Broderick, John Holden, David Nettleton, Laurence Dickter, Jane Jannotta, Karen Michels, Dave West, Sue Bahr, Jeff Lesperance, and our listserv moderators. It is because of their efforts that our association has been revived and continues to thrive.

**See you around the neighborhood!**

***Enoch Edmond***

President, SFCCA

Email: [SFCCA.President@gmail.com](mailto:SFCCA.President@gmail.com)

Website: <https://southfourcorners.org/>

## Next SFCCA Meeting

**Tuesday, May 21, 7-8:30pm**

**Schweinhaut Senior Center 1000 Forest Glen Road**

**Featuring guest speaker:**

**Nkosi Yearwood, Montgomery County Planner**



**A**re you interested in learning more about the University Boulevard Corridor Plan? Please join your neighbors at the upcoming meeting to hear from Montgomery County Planning about this issue and how it may affect our neighborhood. There will also be an opportunity to ask specific questions. For general background on the plan, please see the Advocacy article, "Montgomery Planning Initiatives" beginning on page 4.

## SFCCA Officers & Chairpersons

### Officers:

President - Enoch Edmond

Vice President - Jonathan Kirschebaum

Secretary - Tricia Brooks

Treasurer - Eileen Broderick

### Committee Chairs:

Communications - **VACANT**

Membership - Eileen Broderick

Public Safety - Jeff Lesperance

Public Works - **VACANT**

Social Events - **VACANT**

Zoning, Land Use and Traffic - Jonathan Kirschenbaum

### Subcommittee Leads:

Listserv Manager - Jeff Lesperance. Newsletter Distribution - Dave Nettleton

Newsletter Editor / Website - Jane Jannotta. Welcome Bags - John Holden

## SFCCA Addresses & Social Media

### Mailing Address:

SFCCA PO Box 792

Silver Spring, MD 20918-0792

### Website:

[www.southfourcorners.org](http://www.southfourcorners.org)

**Editor:** [SFCCAeditor@gmail.com](mailto:SFCCAeditor@gmail.com)

### SFCCA Listservs:

<https://groups.io/g/SFCCAMembers>

**Facebook:** [www.facebook.com/southfourcorners/](https://www.facebook.com/southfourcorners/)

***Like our  
page on  
Facebook!***

## Local History Corner

# RACHEL CARSON LIVED HERE

By Laurence Dickter

Rachel Carson was one of the most celebrated, consequential scientists and influential writers not just of her time, but of any time. Through her groundbreaking research and literary works, beginning with her lyrical trilogy about the sea (1941-1955) and culminating with the environmental classic *Silent Spring* (1962), she is credited with revolutionizing our relationship to and understanding of the natural world. Her contributions not only led to significant policy changes and laws to protect our land, air and water, but also helped spark a global environmental movement which takes much of its inspiration from her to this day.



**Rachel Carson at work**

From 1937 until her death in 1964, Carson lived in a succession of six nearby homes, including one she rented at 9713 Sutherland Road on the northern edge of today's North Hills of Sligo neighborhood. She lived there for approximately six years, beginning in 1945.

Before the Capital Beltway was built and the sound barrier was constructed separating the two neighborhoods, South Four Corners and the North Hills were contiguous. Forest Glen Road and its little shopping center (where the barber shop and convenience store are today, and which once included Fairway Drugs, a bakery and a Sinclair gas station) extended out to Colesville Road, while Sutherland continued

unbroken all the way to Sligo Creek Parkway.

To make way for the new highway, a number of homes and businesses in its path were demolished, including Carson's former home on Sutherland Road. Actual construction of the Beltway began in 1955 but, by that time, Carson was living in a rental home on Williamsburg Drive in the Woodmoor quadrant of Four Corners.

For her final home, Carson decided to have one built to her specifications. The site she chose was on a large, heavily wooded corner lot at 11707 Berwick Road in the White Oak area of Silver Spring, not far from today's Springbrook High School. The contemporary, one-story brick rambler has large picture windows and lots of light. Completed in 1956, it was designed intentionally to fit in with the natural environment, in harmony with the surrounding landscape.

It was on Berwick Road where Carson lived the final years of her life and began writing *Silent Spring*. In the clear, poetic prose she was known for, the book documented the adverse environmental effects caused by the indiscriminate use of chemical pesticides. It was first serialized in the New Yorker magazine in 1962 and appeared in book form later the same



**11701 Berwick Road, her final home in Silver Spring, and where she wrote *Silent Spring***

year.

With the interconnectedness of all living things as its overarching theme, together with its expose of a whole host



**DDT was widely marketed as a benefactor of all humanity until Rachel Carson exposed its harmful effects on human health and its highly toxic impact on the environment**

of corporate deceptions and other misdeeds, *Silent Spring* was an instant bestseller. While the book's commercial success and its sensational findings greatly enhanced her public stature and celebrity, it also guaranteed that Carson would become the target of an intense and well-orchestrated, but ultimately unsuccessful, smear campaign by corporate and other special interests to discredit her work.

After years of poor health and various painful, debilitating conditions, Carson died of cancer at home on April 14, 1964. She was only 56 years old.

Today *Silent Spring* is widely considered to be one of the most influential books of all time. One list sandwiches it in between the Bhagavad Gita and Thoreau's *Walden*, and, among the most influential science books of all time, it is ranked right up there with works by Newton, Einstein, Darwin, Ptolemy and Freud. Another list, one that ranks the most influential books of the Twentieth Century, ranks *Silent Spring* second only to Anne Frank's *The Diary of a Young Girl* among non-fiction titles.



In 1991, the “Carson House” on Berwick Road was officially declared a National Historic Landmark by the U. S. Department of the Interior, a designation reserved for places that are considered to possess exceptional value in illustrating the historical and cultural heritage of the United States.

Today, the house is maintained by the Rachel Carson Landmark Alliance (RCLA) pretty much the way Carson left it. In a corner of her study, for instance, visitors will see a document from 1959 in the Royal typewriter



beside her desk. Outdoors, the grounds surrounding the house reflect the natural setting and unconventional approach to landscaping favored by Carson, while a wild area she wanted to preserve “for birds and frogs” continues to occupy over a third of the property.

Though the “Carson House” has been open to the public only on limited occasions, you may call RCLA at 301-593-4900 or email [rachelcarsonlandmark@verizon.net](mailto:rachelcarsonlandmark@verizon.net) to inquire about special access to the property. □

## Advocacy

# MONTGOMERY PLANNING INITIATIVES

By Jonathan Kirschenbaum

**T**he Zoning, Land Use, and Transportation Committee has officially resumed its duties with the return of regular SFCCA meetings. I would like to thank Laurence Dickter, John Holden, and David Kelly for their membership on the committee and their continued dedication to planning and transportation issues that affect our neighborhood. The purpose of the committee is to monitor any county or state projects that have the potential to impact the livability of our neighborhood and the greater Four Corners community.

Several major planning and transportation initiatives that the committee is closely following are the University Boulevard Corridor Plan (UBC) and the Attainable Housing Strategies (AHS) initiative. Montgomery Planning is the lead agency for both initiatives, which could affect zoning and transportation directly in our neighborhood and the larger Four Corners community.

The UBC Plan commenced in spring 2022 and seeks to “understand community needs in relation to traffic

safety, regional connectivity, environmental sustainability, and economic development,” according to Montgomery Planning’s website. The plan will explore opportunities for new mixed-use development along Colesville Road and University Boulevard. If proposed, this could come in the form of zoning map changes to our commercial shopping areas, like Woodmoor and Safeway, to allow a mixture of new residential and commercial development. Other major initiatives the plan is exploring are opportunities for new bikeways, wider sidewalks for improved walkability, better bus stops, and a bus rapid transit line that would be like the Flash bus along Colesville Road.

The plan’s study area spans three miles along University Boulevard between Amherst Avenue in Wheaton and the Beltway at the University Boulevard interchange. Within our neighborhood, the study area includes Sutherland Road, Rogart Road, and Lorain Avenue north of Lanark Way, Harding Drive, Gilmoure Drive, and Dallas Avenue and Dennis Avenue north of Renfrew Road and Proctor Street. See if your property

is included in the study area by looking at the UBC Plan map included in this article.

Montgomery County is currently working on developing preliminary recommendations for the UBC Plan and is planning to provide draft plan recommendations to the Planning Board either before or after their August recess.

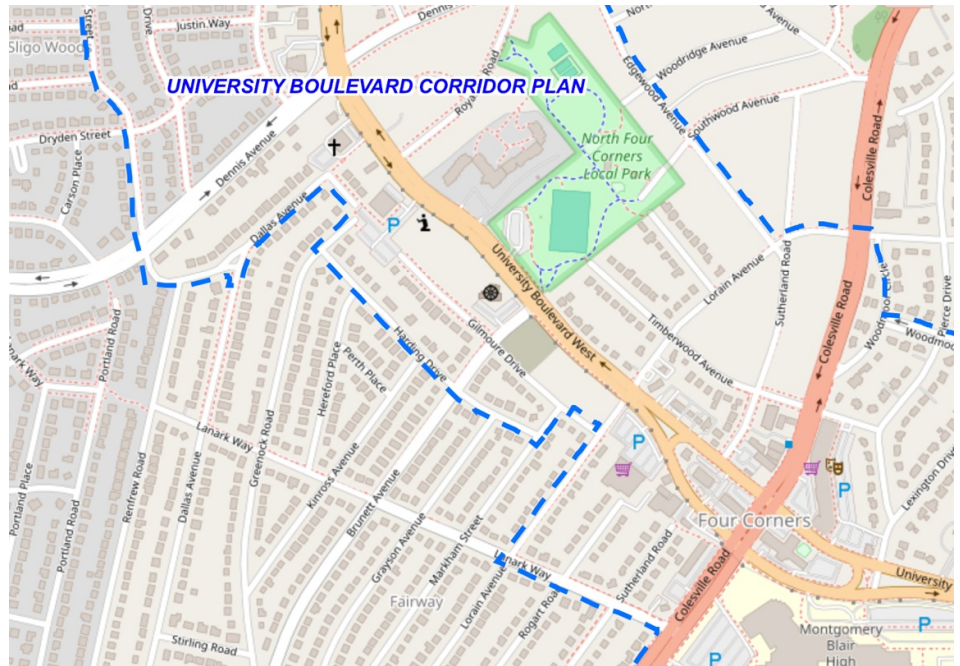
There is still time to get involved in the planning process! Montgomery Planning will be hosting several in-person and virtual meetings beginning in early May where planning staff will be discussing their emerging ideas for the plan. For additional information about the UBC Plan and upcoming meetings, visit <https://montgomeryplanning.org/planning/corridor-planning/university-boulevard-corridor-plan/>. Look for “Upcoming events” on the right-hand side of the page for the meetings in May.

The other planning item that will potentially affect our neighborhood is the AHS initiative, which began in the spring of 2021. Montgomery Planning,



under this initiative, has been examining ways to increase housing opportunities and increase density in areas that are zoned for single-family houses. For context, most of our neighborhood is zoned R-60, which is a single-family zone. Curious about what your property is zoned? Visit <https://meatlas.org/zoning/> to find your zone!

Preliminary recommendations of the initiative from Montgomery County Planning would allow small apartment houses (up to four units) within 500 feet of bus rapid transit lines, which in the context of our neighborhood is the Flash bus line along Colesville Road. While work on the initiative laid dormant for a while, Montgomery Planning will be holding several work sessions with the Planning Board over the next several months. Our committee will continue to monitor this initiative and any future zoning regulation proposals that may come to implement



Source: <https://montgomeryplanning.org/planning/corridor-planning/university-boulevard-corridor-plan/>

the preliminary recommendations of the AHS initiative. For more information, visit

<https://montgomeryplanning.org/planning/housing/attainable-housing-strategies-initiative/>. ☐

## RECENT DEVELOPMENTS AND THE NEED TO MAKE OUR VOICES HEARD

By John Holden

**S** **FFCCA** has long worked, either independently or with allied groups and individuals, to advocate for our community's quality of life and the preservation of South Four Corners' residential character. Many of its achievements are due to SFCCA's official standing and advocacy before Montgomery County boards and agencies, and to the voices of individual residents. The need to speak up to our elected officials is apparent from recent developments, such as those related to implementation of Bus Rapid Transit (BRT) on US 29 (Colesville Rd), and the Montgomery Planning's "corridor plan" for University Blvd.

The Montgomery County Department of Transportation (MCDOT) is now doing preliminary engineering design for barrier-separated, BRT-only bus lanes down the middle of US 29, plus an additional lane on the ramp from southbound US 29 to westbound I-495. This project for the Median lanes on US 29 was approved in Nov 2022 by

the Montgomery County Council at the time, despite the fact that a Managed Lane option (a dedicated HOV lane to be shared with buses on the existing roadway during certain hours of the day) was \$42.1 million (34%) less expensive, and the Council Staff Analysis and Recommendations stated that "the Managed Lane option is clearly superior in nearly every meaningful metric." At a 24 April 2024 meeting of the US 29 Corridor Advisory Committee, MCDOT noted that only ~5% of the design is completed, and that it would require an action by the current County Council to change the design objectives of median BRT lanes, such as to the Managed lane option that was studied.

These and other issues continue to be reported and discussed on the SFCCA listserv, and neighbors are encouraged to follow the developments carefully. The need to stay informed and to make our voices heard is apparent. ☐



# News You Can Use

## TO THE DUMP?

By Sue Bahr

Here is a quick look at materials you must take to the county waste transfer station at Shady Grove Road (“the Dump”), and electronics items you may take there or put in your trash.

### **Hazardous material must not be placed in our trash.**

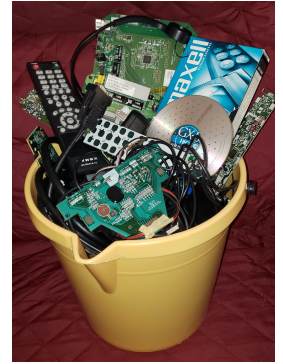
Hazardous materials must be taken to the Household Hazardous Waste section at The Dump. Think: pesticides, and anything that is toxic or could burn or explode in your trash can. Hazardous waste includes:

- **Batteries.** AA batteries, watch batteries, lithium-ion batteries, etc. (I keep a container for used batteries next to my new batteries.)
- **Spray paint cans** that still have paint inside. You can dry out and harden cans of latex paint at home—such as by air drying the paint—and then put the cans, separate from the lids, in the trash.
- **Hand sanitizer.** It’s not listed on the county website, but it should be taken to the Household Hazardous Waste facility. (Check the date on any bottles you have. The hand sanitizer will lose effectiveness over time.)



- **Fingernail polish.** Alternatively, you can pour fingernail polish on paper, let it dry, and put the paper in your trash.

**Electronics may be recycled** by dropping them off at the Electronics Drop-off area at the Dump. They may also go in our trash, or donated. Electronic items accepted for recycling at The Dump include: **anything with a circuit board, remote controls, power cords, printer cables, headphones, CDs, and VHS tapes.**



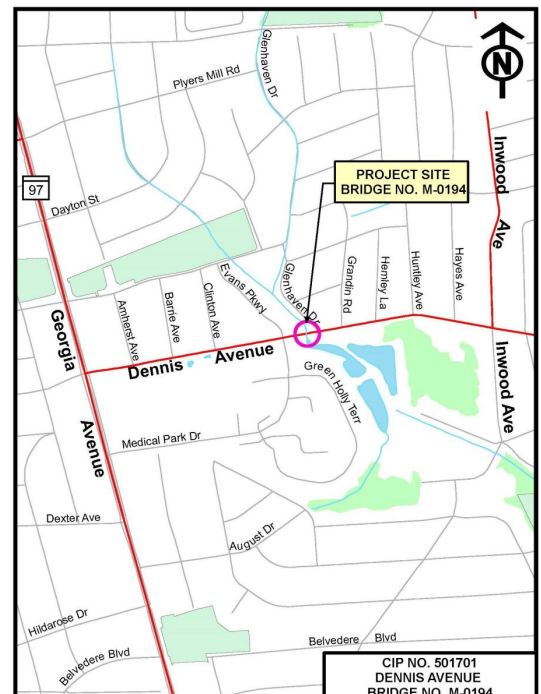
For directions and hours of operation for the Dump, see <https://www.montgomerycountymd.gov/DEP/trash-recycling/drop-off-hours-events.html>. One practical idea is to combine the trip to the Dump with visits to local businesses, like the Home Depot on Shady Grove, and Donation Nation which sells furniture and household items they obtain from clearing out houses. <https://www.facebook.com/DonationNationUSA/>

If you have questions about how to dispose of specific items, check out the county’s website at <https://www2.montgomerycountymd.gov/DepHowDoI/search.aspx>.

## DENNIS AVENUE BRIDGE PROJECT

This project provides for the replacement of the existing Dennis Avenue Bridge over Wheaton Branch, a tributary to Sligo Creek. **Construction is to take place from Spring 2025 - Fall 2025.** The bridge and road will be closed to traffic within school summer break during the construction while maintaining vehicular traffic with a detour. The pedestrian/bicycle traffic will be detoured via a temporary shared-use bridge crossing Wheaton Branch north of the Dennis Avenue bridge. Accelerated bridge construction techniques will be utilized to minimize the disruption to the traveling public and local community.

For more details and to provide public feedback, please visit <https://www.montgomerycountymd.gov/dot-dte/projects/dennisave/index.html>.





# CONCERTS AT SLIGO CREEK GOLF COURSE



Many of us have played golf or walked past the beautiful grounds at Sligo Creek Golf Course. Did you know they offer an outdoor concert series? Just a short walking distance from our neighborhood, enjoy their Tune's Day outdoor music events on Tuesday evenings in April and May.

Or their family-friendly Summer Concert Series on Friday evenings, June through October. Great music, great food, great fun! For more information, go to

<https://southfourcorners.org/about/>



## POTHOLE REPAIR

Montgomery County will inspect and repair potholes within 3 business days on County maintained roadways. Go to <https://www3.montgomerycountymd.gov/311/Services.aspx?SolutionId=-1> for more information, and to create a County Service Request. Be sure to include a brief description of the pothole. If the road is a numbered route such as Rte. 355, contact the Maryland State Highway Administration at 301-513-7300.

## NEW AQUATIC REC CENTER IN DOWNTOWN SILVER SPRING!

**The Silver Spring Recreation and Aquatic Center is now open!** Located at 1319 Apple Avenue (near Cameron and 2nd Avenue), the facility includes typical recreation and leisure activities, pools for general swimming, hot tubs, an aquatic rock climbing wall, low level diving, exercise and aquatic play, training and teaching, a gymnasium, exercise and weight room spaces, movement and dance studios, multipurpose activity rooms, public use space, and a social space with a culinary arts kitchen. Come and enjoy lap swimming, classes, pickle ball and more. Hours:

Monday - Friday, 6 am to 9 pm

Saturday/Sunday, 9 am to 5:30 pm.

Accessibility features include ramps, elevators, ladders and lifts. For more information, click

<https://www.montgomerycountymd.gov/rec/facilities/recreationcenters/silverspring.html> ☐





# TRIBUTES

By Laurence Dickter

## MARILYN BRESNAHAN, 1918-2020

Many of you may still remember Marilyn Bresnahan, our former neighbor who moved away in 2010. By that time, Mrs. Bresnahan was the last of the original homeowners still living in the neighborhood. She and her husband Harry, who predeceased her by 16 years, moved into their brand new Tudor Cape on Lanark Way in 1941, where she lived for the next 69 years.

At the time of her death in the Riderwood retirement community just a few miles up the road, Mrs. Bresnahan was 101 years old.

A native Washingtonian, Mrs. Bresnahan was raised by her mother in Miami, Florida until the hurricane of

1933 destroyed their home. After returning to the District, she graduated from Roosevelt High School in 1935, after which she attended Kathryn Gibbs Secretarial School. After a career spanning some 45 years, Mrs. Bresnahan retired from Vitro Laboratories in Aspen Hill, a defense contractor which once was the largest



private employer in Montgomery County.

She and Harry were both wonderful neighbors, quiet and unassuming to a fault. Feeling strongly that her memories and the historical information that she could provide were important to preserve, I asked Mrs. Bresnahan several times before she moved if she would agree to being interviewed for this newsletter. Each time she demurred and, with characteristic modesty, she always asked why anyone would be interested in her recollections of what our neighborhood and the area surrounding it were like decades ago. Although disappointed, I respected her decision then and still do.

## JUDY BEMAN, 1937-2023



Judy Beman, who died at home last year, was well known to an untold number of neighbors (and many, many dogs) whom she regularly greeted as they walked by her home on Lanark Way. She spent a lot of time gardening in front of her house, but was never so absorbed in her work that she wouldn't stop whatever she was

doing in order to engage in conversation with whomever happened by.

Judy was already living across the street when I moved here in 1990. She was an early childhood educator for many years, retiring at the age of 77 after running the kindergarten enrichment program at Rosemary Hills Elementary School. In retirement, she volunteered for eight years at A Wider Circle, a social services organization whose mission it is to help lift people out of poverty. She was still working her shift there almost up to the time she died.

One of the most creative people I have ever known, Judy painted, drew, and made collages and mosaics. She even collected scrap metal on her neighborhood walks and turned them into sculptures. And beyond her artistic talents, her interests ranged far and wide. She was curious about so many things.

She was also a prolific, world class quilter who put her sewing skills to good use during the early days of the COVID-19 pandemic. When everyone was being advised to "mask up," Judy produced a pile of cloth masks, which she then invited neighbors to pick up at her house.

I will never forget the day several years ago that my sister's long-time partner killed himself, a tragedy calling for my immediate presence in Florida. Just as I was preparing to drive to BWI, Judy came over to talk to me. I told her where I was going and why. Sensing how upset I was, and without hesitation, she insisted that she take me to the airport herself. You can't ask for a better neighbor or friend than that. □

### Important Phone Numbers:

Montgomery County (MC) General Info & Service: 311. Outside of MC: 240-777-0311. TTY (for hearing impaired): 240-773-3556.

Police & fire emergency: 911. Police non-emergency: 301-279-8000. Fire non-emergency: 240-776-4700.

24-Hour Emergency Preparedness Hotline: 240-777-4200. Power outages, downed wires: Pepco 877-737-2662 .

Website: <http://www.pepco.com/outage-center/>