



SOUTH FOUR CORNERS

Citizens Association



Building a stronger community, one neighbor at a time

Sept/Oct 2017

INSIDE THIS ISSUE

Next SFCCA Meeting	1
Mark Your Calendars	1
President's Corner	2
Upcoming Event	4
Nominations/Elections	4
Membership	4
Advocacy	6, 7
Opening Doors	7
Public Works	8

MARK YOUR CALENDARS!

Sept 18, 2017 – 7pm

SFFCA Community Meeting
Schweinhaut Senior Center

Sept 23, 2017 – 10am

Clean-up of Forest Glen Rd
(meet at Argyle Park tennis courts)

Oct 22, 2017

Halloween Parade
South Four Corners Park
912 Forest Glen Road

Nov 20, 2017 – 7pm

SFFCA Community Meeting
Schweinhaut Senior Center

Nov 25, 2017 – 10am

Clean-up of Forest Glen Rd
(meet at Argyle Park tennis courts)

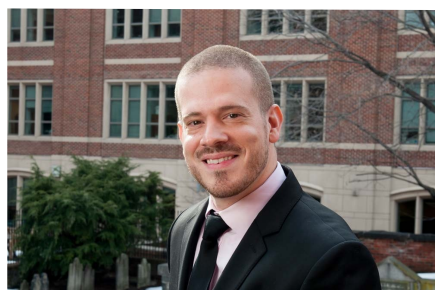
Dec 2, 2017

Tree Lighting Celebration

Next SFCCA Meeting

Monday, September 18 7-8:30 pm
Schweinhaut Senior Center 1000 Forest Glen Road

September is National Preparedness Month

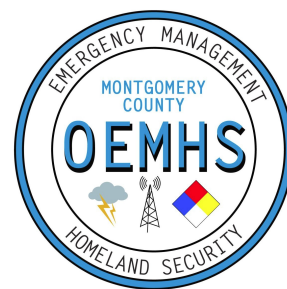


Please join us for a presentation by **Joe Corona, CEM**. As Outreach Coordinator for **Montgomery County's Office of Emergency Management and Homeland Security (OEMHS)**, Joe supports preparedness planning efforts for the community and coordinates outreach efforts for the office.

During our September meeting, Joe will discuss some of the major hazards that Montgomery County faces, as well as the specific steps we can take to prepare for them. In addition, Joe will share information on how to write a plan and build a kit that will help each of us prepare for an emergency.

Originally from New York, Joe spent two years working for FEMA in the first implementation of the National Disaster Recovery Framework for a catastrophic event – Hurricane Sandy. In addition to his work with Montgomery County, Joe is a Senior Policy Analyst at the Center for Health & Homeland Security at the University of Maryland.

Throughout the month of September, OEMHS will be using Nextdoor.com to conduct polls on emergency preparedness and to provide additional information on preparedness. For preparedness tips throughout the month of September, be sure to follow them on Twitter @ReadyMontgomery or Facebook <https://www.facebook.com/MCOEMHS/>.



We look forward to seeing you at 7:00 pm on September 18th. **Please remember, SFCCA meetings now end promptly at 8:30 pm.**

President's Corner

Over the past year, I've heard (and read) many concerns about traffic and pedestrian safety in our neighborhood. This information has come from discussions at SFCCA meetings, email, and listserv posts. While not exhaustive, I believe the following list can serve as a baseline for our collective concerns.

Traffic Operations and Pedestrian Safety Issues:

- **Sutherland Rd:** Increased amounts of vehicular traffic at dangerous speeds. We see a lot of high-speed, cut-through traffic on Sutherland from Colesville to Lanark to Sutherland to Forest Glen.
- **Rogart Rd:** All U.S. Post Office vehicles enter/exit the local Post Office from Rogart Rd. rather than from University Blvd. Post Office vehicles speed in/out causing particular stress to residents who are waiting for their children to be picked up at the school bus stop. City buses barrel down Lanark and Sutherland. Ambulances cut sharp left turns as they race to the hospital.
- **Lanark Way and Colesville Rd:** Very dangerous intersection for vehicles turning left/northbound from Lanark Way onto Colesville Rd. Equally dangerous for northbound vehicles turning from Colesville onto Lanark. We see a lot of cut-through traffic and very high speeds throughout the day. Many drivers ignore speed limits and stop signs.
- **Gilmoure Dr:** Challenges with permit parking restrictions. Residents are unable to have impromptu guests. Many are getting ticketed when guests stop. In August, Montgomery County DOT announced it will again distribute paper permits for residential parking. For details, please call the Parking Office at 240-777-8740.



- **Dennis Ave at Portland Rd:** Vehicles go over the speed limit on this street. One neighbor has reported that his car has been hit three times and his neighbor's car has been hit twice.
- **Brunett Ave:** Another challenging intersection for those turning left/westbound from Brunett onto University. Also a high-speed cut-through to Forest Glen.
- **BRT:** Could bring more vehicles traveling at higher speeds through our neighborhood and impact pedestrian safety.
- **Excessive Speeding:** Noted on Brunett, Dennis, Renfrew, Dallas, Forest Glen, Lanark and Sutherland.
- **Requests to DOT:** Several requests have been made for permanent traffic-calming measures to be installed, including requests for a speed indicator.
- **Enforcement:** Could Montgomery County do a better job of marking residential parking, examining code enforcement, improving speed limit signage?

At SFCCA's November meeting, we'll have the opportunity to discuss these and other concerns with Khursheed ("KB") Bilgrami from Montgomery County's Department of Transportation (DOT). If you have additional traffic operations and/or pedestrian safety concerns to share, please contact me by email or phone. I look forward to hearing from you.

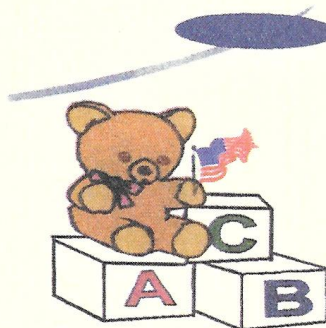
Carolyn Stanek Lucy

SFCCA President & Lower Markham Resident
SFCCA.president@gmail.com
(202) 251-6403

Law Offices of Robert Coyne

400 University Blvd. West
Silver Spring, MD
301-681-5013
www.rcoyne-law.com

*Bring this ad in to receive
a free consultation*



Hilda Estrada's Day Care

10014 Raynor Road
Silver Spring, Maryland
20901-2123
Phone: 301-593-0660



Tamara
Kucik Team

OF W.C. & A.N. MILLER, A LONG AND FOSTER CO.



PROFESSIONALLY STAGED - SOLD OVER LIST!



BEFORE



AFTER



AFTER



BEFORE

Our professional stagers will highlight your home's strengths with clean updated design, creating the freshness that appeals to prospective buyers. A well staged home also receives more showings, which has the potential to drive up the sales price and bring more return on your investment.

DONATE, DUMP & SHRED! Saturday, October 14th

9am – 11am • Argyle Park on Forest Glen Road



Time for your fall clean up! We're bringing A Wider Circle for your donated goods (receipts provided), Patriot Shredding for your documents, and a dumpster for the rest. Stay and enjoy a donut from the Woodmoor Bakery, and a cup of joe from Starbucks. Visit www.Tamara4Homes.com for more details.



Ranked Among "America's Best Real Estate Agents 2017"
by Real Trends and the Wall Street Journal.

Tamara Kucik (301)580-5002 • tk@tamara4homes.com
www.tamara4homes.com • (202)966-1400 office



Upcoming Event

HALLOWEEN PARADE

Oct 22, 4-6 pm

Calling all Ghosts, Goblins and Superheroes! Come in your costume and meet at **South Four Corners Park at 4pm** for our annual neighborhood Halloween Parade. We'll parade up Portland Road and back down Dallas Avenue before returning to the park for treats. Contact **Jenny** (jenny.cannon@gmail.com) if you're able to donate cookies or other baked goods.



	Commercial & Residential <i>Free Estimates</i>
	Great References Available
	(240)602-0984
	Licensed & Insured
Susana's Cleaning Services LLC susanascleaningllc@yahoo.com	100% Guaranteed Reasonable Prices

Nominations & Elections

If you volunteer as SFCCA's Secretary, all of this space in the newsletter can be YOURS!

In order to serve South Four Corners well, we need to nominate and elect SFCCA Officers for 2017-18. **Elections will be held at the upcoming SFCCA meeting on September 18 at 7pm.**

The current slate of candidates includes:

- President – Carolyn Stanek Lucy (incumbent)
- Vice President – **Nominations needed!** Larry Dickter (incumbent) may run
 - Secretary – **Nominations needed!**
 - Treasurer – Dick Masselle (incumbent)

Any SFCCA member in good-standing (meaning you've paid your \$15 dues for 2017) can run for and/or nominate someone for office. To nominate someone for an Officer position, please email SFCCA.President@gmail.com before September 18, 2017.

Membership

Support our community by becoming a member of the **South Four Corners Citizens Association!** SFCCA is the voice of our residential community. Its vigorous advocacy and events make South Four Corners safer, more beautiful and more connected.

Join today! Only \$15 per year:

- Pay by cash/check at the upcoming SFCCA meeting
- Pay by check payable to SFCCA, send to: SFC Membership
PO Box 792 Silver Spring, MD 20918-0792
- Pay online using credit card or PayPal at
<https://southfourcorners.com/membership>



For more information contact Eileen Broderick, Membership, at eileen@starpower.net



BETTY BATTY
OF LONG & FOSTER REAL ESTATE



www.bettybatty.com



ANOTHER HAPPY SELLER

Betty did an amazing job helping us to sell our home. She is knowledgeable about the neighborhoods, buyer interests and comps, etc. and put all of that information together to help us both prepare our home for sale and sell it! She was always available for questions if we had them. She and her team kept us informed of all of the “what’s next” steps when we needed them which was extremely helpful. With Betty’s help we sold our house within one weekend of being on the market. Everything from the beginning to closing went so smoothly and seamlessly! We could not have asked for a better home selling scenario! We would highly recommend Betty to anyone whether it be buying or selling! —*The Kohlenstein Family*

Call **BETTY** for a **FREE** consultation. You won’t be disappointed!

Montgomery County Public Schools 2017-2018 School Calendar

SEPTEMBER 5	FIRST DAY OF SCHOOL	JANUARY 15	Holiday • Schools/Offices Closed
SEPTEMBER 21	No School; Students/Teachers	JANUARY 25	Early Release Day
OCTOBER 6	Early Release Day	JANUARY 26	No School • Professional Day
NOVEMBER 9	Early Release Day	FEBRUARY 19	Holiday • School/Offices Closed
NOVEMBER 10	Early Release Day K-8	MARCH 2	Early Release
NOVEMBER 17	Early Release Day K-8	MARCH 26-30	Spring Break • Schools Closed
NOVEMBER 22	Early Release Day	APRIL 2	Holiday • Schools/Offices Closed
NOVEMBER 23-24	Holiday • Schools/Offices Closed	APRIL 9	Early Release Day
DECEMBER 25-29	Winter Break • Schools Closed	MAY 28	Holiday • Schools/ Offices Closed
JANUARY 1	Holiday • School/Offices Closed	JUNE 12	Early Release Day; LAST DAY OF SCHOOL

LONG & FOSTER REAL ESTATE ■ Exclusive Affiliate of Christie’s International ■ 7161 Woodmont Ave., Bethesda, MD 20814
battyrealestate@gmail.com ■ O: 240.800.5155 ■ C: 301.832.7609



Advocacy

TRANSIT CONTROVERSIES HEATING UP

By Larry Dickter

In addition to roadway safety issues, the busway proposal . . . would profoundly impact traffic patterns leading into and around our neighborhood.

Declaring it an “elegant” proposal, Montgomery County Council President Roger Berliner, along with others, is enthusiastically promoting a proposal to run a dedicated busway down the median of Colesville Road (Route 29) straight through the Four Corners intersection. What Berliner is calling an “elegant” proposal, others are calling a “zombie” proposal, one that has been studied previously and rejected for Route 29, as well as for other heavily traveled County roads such as Rockville Pike and Georgia Avenue.

Nevertheless, the County Council is poised to pay for yet another study that some members, including Berliner, are undoubtedly hoping will validate their enthusiasm for the busway proposal.

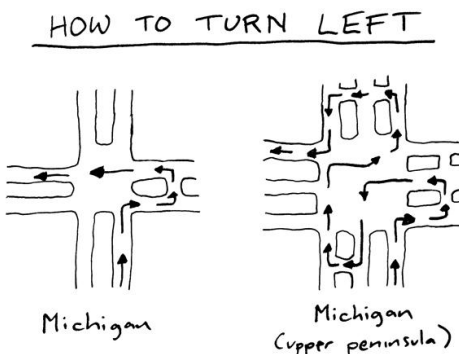
Those of us who live along the Route 29 Corridor know from personal experience how congested and dangerous the roadways leading into and through Four Corners are. In order to create the room to run a busway through the intersection without eliminating an existing travel lane, each of those existing lanes would have to be reduced from 12 to 10 feet. Berliner and other busway advocates, insist that can be done without adversely affecting roadway safety.

On the other hand, if one takes into account the increasing number of larger vehicles (trucks and SUVs are currently outpacing car sales) and oversized loads traveling our highways today, it may be that narrowing existing lanes is just asking for more accidents.

In addition to roadway safety issues, the busway proposal being pushed by

Berliner and others would profoundly impact traffic patterns leading into and around our neighborhood. For instance, left hand turns to and from non-signalized intersections (like Lanark Way) between Sligo Creek Parkway and New Hampshire Avenue would be eliminated.

And to make matters even worse, left turns from University Boulevard onto northbound and southbound Colesville Road would also be eliminated. Instead, motorists would have to take what is called a “Michigan Left” by overshooting the intersection, going through a u-turn lane, and coming back to the intersection from the opposite direction before turning right. This confusing maneuver is also known as a “Michigan Loon,” Northern Michigan’s iconic bird notable for its violent mating dances and eerie wail.



The reason for all of this is to make way for Montgomery County’s “Bus Rapid Transit” (BRT) route along the Route 29 corridor, which is being designed not to relieve traffic congestion, but (as some County officials are candidly admitting) primarily as a mega-million dollar infrastructure gift to the

developer of the massive new “Viva White Oak” project just up the road from Four Corners. In fact we know that once White Oak is built out, gridlocked traffic leading into Four Corners is projected to get even worse, with or without BRT.

At a recent meeting in Silver Spring, Berliner told local civic leaders and others who came to engage with him that Four Corners residents would just have to “bear the brunt” of any adverse impact on our community from BRT and the busway. And although he was supposed to stay and answer questions, Berliner fled the building without taking a single question from the audience

As reported previously in this newsletter, the Maryland Transit Administration (MTA) released a thousand-plus page report (at a cost of millions of dollars) earlier this year showing that the best overall performing alternative among those it studied was the No Build Alternative, meaning that MTA is unable to recommend BRT for Route 29. This was not surprising, since previous analyses and studies completed over the years also concluded that BRT would not be an effective way to address traffic and other challenges along the Route 29 corridor.

Since Montgomery County officials did not get the endorsement for BRT they wanted out of the MTA study, they decided to toss aside two years’ worth of work and start all over again with their own consultants and hand-picked advisory committee they packed with nine members from a single pro-BRT advocacy group and other long time BRT champions. Some civic leaders, independent-minded advisory committee members and other knowledgeable observers are saying that

the County's new process is being conducted in ways that stymie meaningful participation by those who have long studied the issues and who have been asking the tough questions about BRT-related matters for well over two years.

It should be noted here that the County is currently paying a public relations firm over a million dollars to wage an aggressive marketing campaign designed to gin up public support for BRT, support that up to now has been largely confined to special interests and their political allies.

The BRT mailer you may have received recently from the County appears to be part of that campaign in that it contains what have been identified as many of

the same highly questionable, exaggerated claims and unsupportable, misleading assertions being made about the purported "benefits" of BRT and its ultimate cost to County taxpayers.

At the same time, this mailer scrupulously avoids any mention of potential disruption to neighborhoods along the route or any adverse impacts on traffic, let alone any mention of far more cost effective, proven alternatives that would improve transit operations along Route 29.

In addition to the busway and related traffic matters, there are many other unresolved issues concerning BRT, not the least being station location and design. Four Corners is slated to have two stations, and since (supposedly) no property can be taken to build these

stations, this is a highly problematic issue for our neighborhood.

There is also the question of what would become of existing local bus routes that pick up and discharge passengers from the curb lane along the Route 29 corridor.

South Four Corners Citizens Association (SFCCA), the Greater Four Corners Alliance, the Montgomery County Civic Federation, and neighborhood representatives to the Corridor Advisory Committee (Karen Michels is the designated representative from SFCCA) will continue to monitor developments and report back to you.

For related articles, please refer to www.southfourcorners.com/advocacy

Opening Doors

MEET NEW NEIGHBOR, CHRISTIAN F. GUADALUPE



1. How long have you been a resident of South Four Corners? My family and I moved to South Four Corners in June 2016. We had been renting a home half a mile east of here so it was not a big move. We love this neighborhood because it is calm, our neighbors are friendly and diverse, and it is close to the Metro and Sligo Creek Trail!

2. What do you do? I recently transitioned to being a Nurse Manager who oversees clinical operations in four George Washington's Medical Faculty Associates sites. Previously, I was working in a similar position at Mary's Center, a federally qualified health center.

3. What makes you special? I believe that I have a lot to offer because I am bicultural and bilingual. I cherish my ability to share my experiences and opinions, and I am open to learning from others of different backgrounds.

4. What brings you joy? I love to bike, coach youth soccer, play with my children, and bake! I also enjoy going for long walks with my wife and our puppy. We love

traveling as a family whenever we can. Most of our trips take us to visit family in South America, but this summer we had the chance to explore Spain.

5. What are the strengths and challenges of being who you are? Some challenges revolve around having to break stereotypes about Latino men, especially given all that is happening domestically. My strengths include being a good dad, and being able to share my experiences as a Latino, male professional to mentor others.

6. In your opinion, what can we do to be a more inclusive community? I think opportunities to come together and get to know each other are great to foster understanding and safe spaces. I also believe that we all need to clearly stand up against language and actions that are biased and racist the minute we experience them.

7. Share with us a quote that inspires you. What does it mean to you? "It is better to be violent, if there is violence in our hearts, than to put on the cloak of non-violence to cover impotence." – Mahatma Gandhi

The idea for an Opening Doors column was born during the first meeting of the Diversity & Inclusion Committee. In each newsletter, we will "open the door" to a new neighbor's life experience, helping each of us develop greater insight into the lives, challenges and aspirations of members of our diverse community. If you are interested in being featured please email Sandra Gutierrez, sandra.n.gutierrez@gmail.com

Public Works

PARKING REGULATIONS

Department of Police Montgomery County, MD

Use of Public Roadways and Sidewalks:

- The roadway belongs to all families on the street. A resident cannot “reserve” parking on the public roadway by use of traffic cones, trashcans, recycle bins or other objects.
- All vehicles parked on the public roadway must be properly registered.
- A vehicle cannot be parked within 5 feet of a driveway entrance or 35 feet of an intersection.
- A vehicle may not be parked opposite the flow of traffic. On a 2-way street, the right wheels will be next to the curb.
- A vehicle cannot be parked blocking passage on a sidewalk.



Be good neighbors and share the roadway!

To report violations, contact the police non-emergency number: 301-279-8000

Departamento de Policia El Condado de Montgomery, MD

Uso de Carreteras Públicas y Aceras:

- El camino pertenece a todas las familias en la calle. Un residente no puede reservar estacionamiento en la vía pública con el uso de conos de tráfico, botes de basura, contenedores de reciclaje o otros objetos.
- Todos los vehículos estacionados en la vía pública deben ser debidamente registrados.
- Un vehículo no puede ser estacionado dentro de 5 pies de una entrada de coches o 35 pies de una intersección.
- Un vehículo no puede ser estacionado frente al flujo de tráfico. En una calle de dos vías las ruedas derecha estarán al lado de la acera.
- Un vehículo no puede ser estacionado bloqueando pasaje en una acera.

Ser buenos vecinos y compartan el camino!

Para reportar violaciones, contacten la policia en el numero no de emergencias: 301-279-8000

SFCCA Officers & Chairpersons

*Like our page
on Facebook!*

Officers:

Carolyn Stanek Lucy, President • Larry Dickter, Vice President
Secretary, NOMINATIONS NEEDED • Richard Messalle, Treasurer

Chairpersons:

Eileen Broderick, Membership • Nghi Nguyen, Neighborhood Safety
Jane Jannotta, Newsletter Editor • Dave Nettleton, Newsletter Distribution
Dave West, Listserv Manager • Betty Batty, Website/Social Media
John Holden, Welcome Bags • Jenny Cannon, Social Events
Michael Lucy, Public Works • VOLUNTEER NEEDED, Community Day
John & Peri Evanoff, Diversity & Inclusion • Jeanne Berman, Gardening

SFCCA Addresses & Social Media

Mailing Address: SFCCA PO Box 792
Silver Spring, MD 20918-0792

Website: www.southfourcorners.com

Editor: SFCCAeditor@gmail.com

SFCCA Yahoo Group Listserv:
www.groups.yahoo.com/group/SFCCAMembers

Facebook: www.facebook.com/southfourcorners/

Important Phone Numbers:

Montgomery County General Information & Service: 311 Outside of Montgomery County: 240-777-0311
TTY (for hearing impaired): 240-773-3556 Police & fire emergency: 911
Police non-emergency: 301-279-8000 Fire non-emergency: 240-776-4700
24-Hour Emergency Preparedness Hotline: 240-777-4200
Power outages, downed wires: Pepco 877-737-2662 Website: <http://www.pepco.com/outage-center/>